

Jobsite Report

Qatar Rail, 3 pedestrian tunnel 64 m -74 m, built with an steel pipe arch for Doha Metro.

Project:

Construction of 3 pedestrian tunnels in cooperation with company Bauer International

Equipment:

Bohrtec drilling rig with a Front Steer 508 mm and DTH hammer, ABS 1200 with a Front Steer 608 mm.

Measuring technology:

an optical measuring system that does not allow a tolerance greater than 20 mm.

Customer:

Qatar Rail, QDVC

Quantity:

Steel pipe arch 508 mm, 69 bore holes, length from 64 m to 74 m, total drilling of 4.922 m,

Soil conditions:

layer of sandstone, clay stone, shell

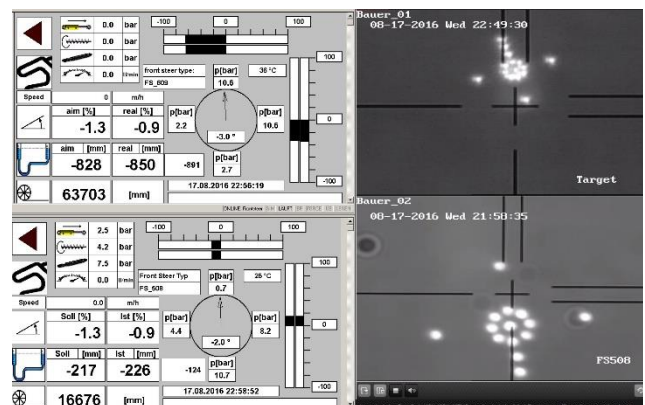
Period:

April 2016 to February 2017

Pictures:

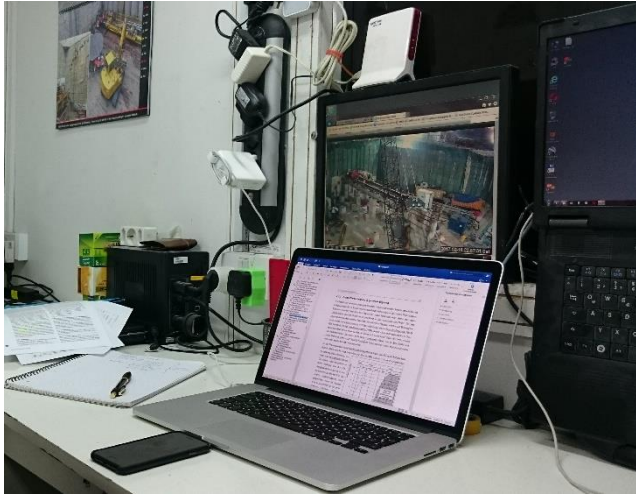


Bohrtec operator, fully controlled monitoring



Display of controlled monitoring

Jobsite Report



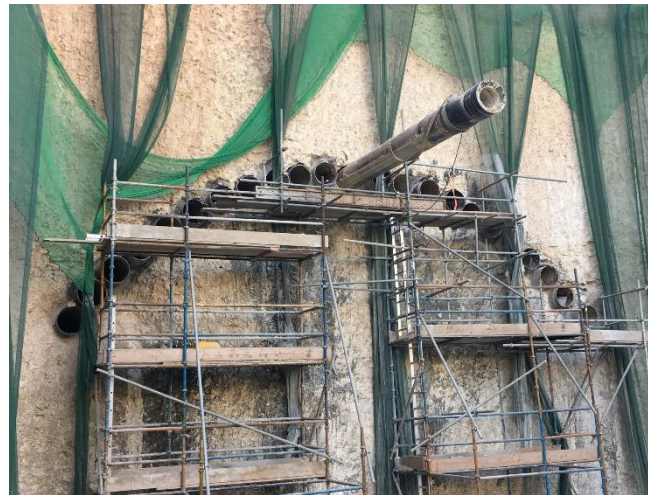
online live view and controlled monitoring



Folding wing head in front of the Front Steer



drilling with two rigs, second machine in stand by



last hole in the pipe arch



excavation of the tunnel



only 20 mm tolerance in the pipe arch, annulus was grouted